

SAP University Alliances

Authors Simha Magal
Stefan Weidner
Jeff Word



Global Bike Inc.

Product

SAP ERP 6.0 EhP7

Level

Beginner

Focus

Basic concepts

Version

2.40

Last Update

June 2015

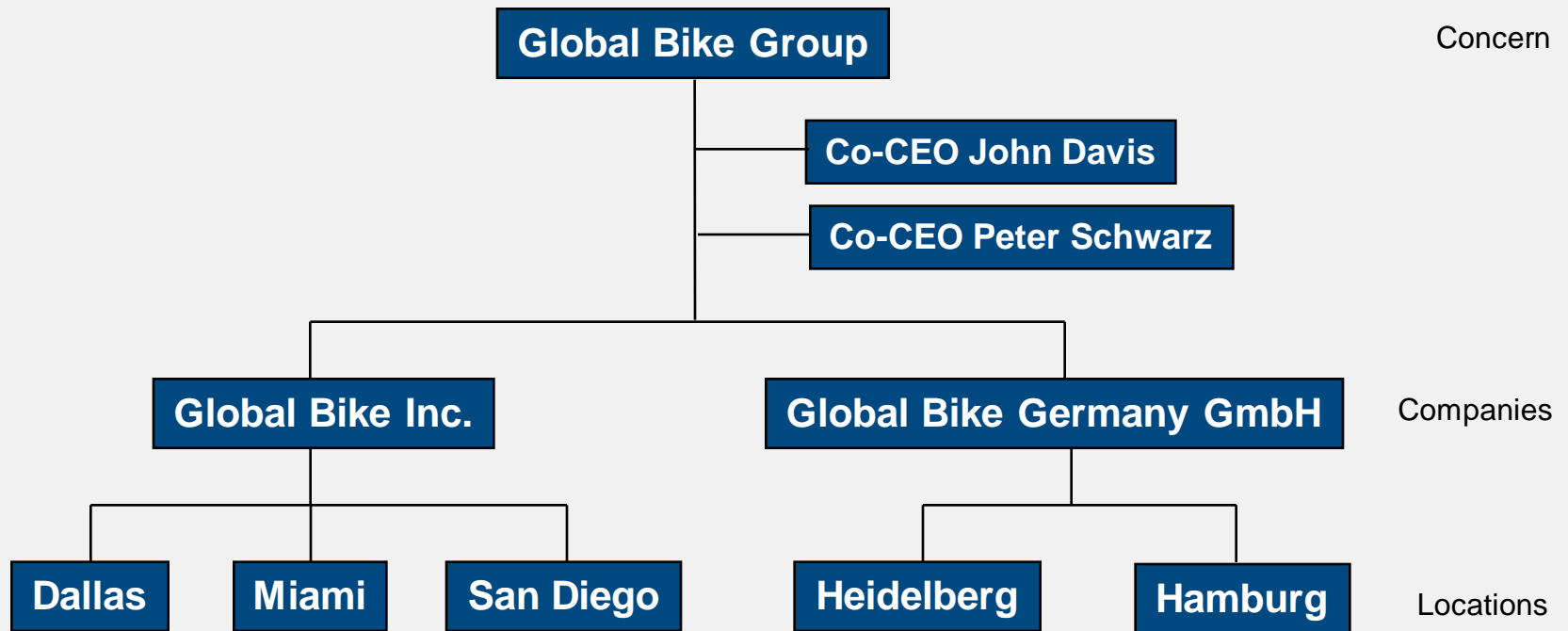


- Introduction to SAP
- Navigation
- **Introduction to GBI**
- Sales & Distribution
- Materials Management
- Production Planning
- Financial Accounting
- Controlling
- Human Capital Management
- Warehouse Management
- Project System

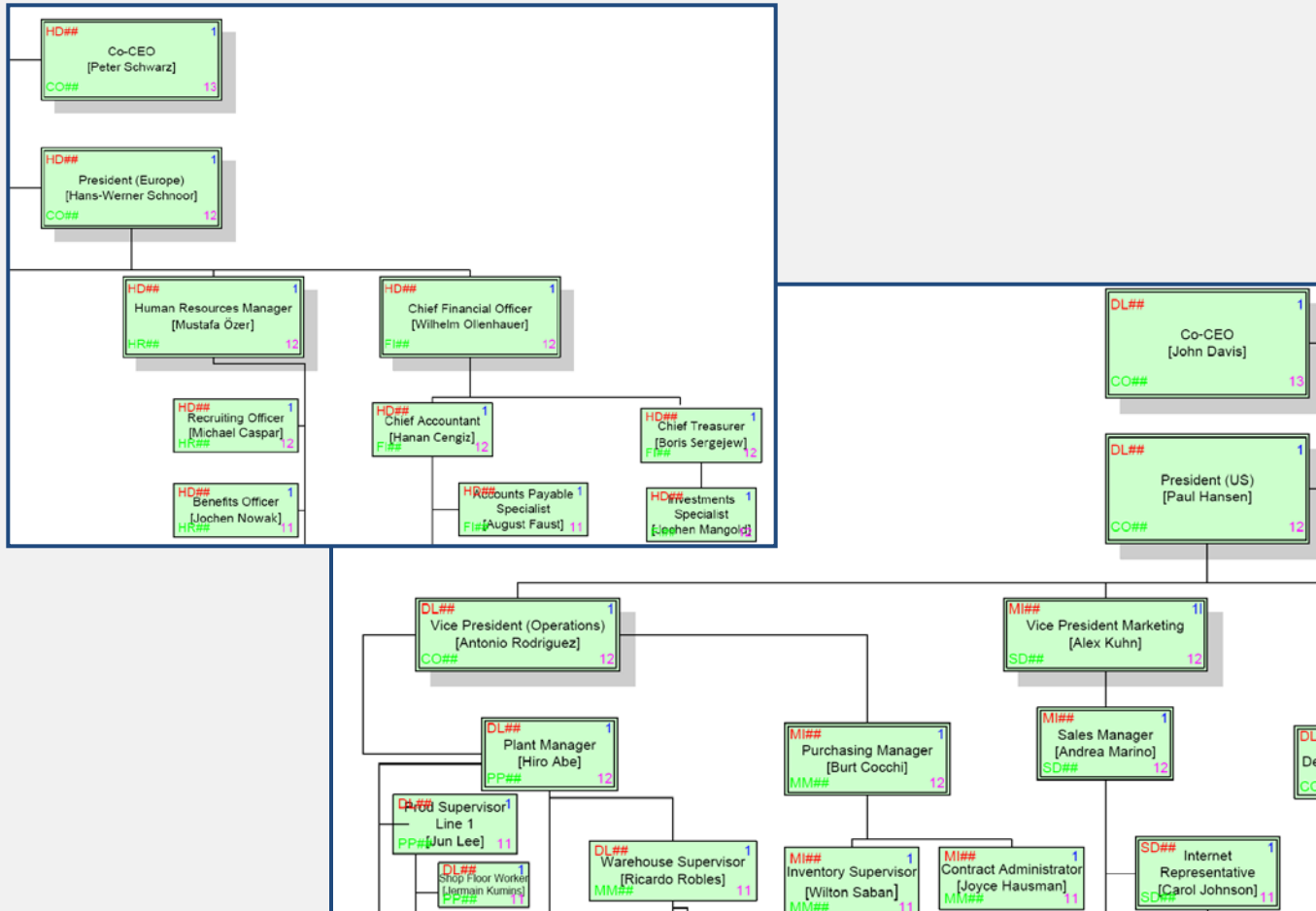
- Global Bike Group
- Organizational Structure
- Products
- Business Partners
- Business Processes

- Background:
 - Global concern using full ERP capabilities
 - Consists of two companies located in the US and in Germany
- History:
 - **John Davis** won numerous mountain bike championships in the US
 - In 1990, started his own mountain bike company (Frankenstein Bikes)
 - **Peter Schwarz** grew up on road bikes in the Black Forest, Germany
 - As a student, he engineered ultra-light composite frames
 - In 1993, started his own bike frame company (Heidelberg Composites)
 - Both met in 2000
 - In 2001, merged to form Global Bike Inc.

- Strategy:
 - John and Peter are Co-CEOs
 - John is responsible for (in terms of reporting)
 - Sales, Marketing, Service and Support, IT, Finance, and Human Resources
 - sells products and brings in money
 - Peter is responsible for
 - Research, Design, Procurement, and Manufacturing Groups
 - builds products and spends money
 - World-class bicycle company serving both the professional and “prosumer” in touring and off-road racing.
 - Focus on:
 - Quality
 - Toughness
 - Performance



- Employees (US and Germany)



- Trading Goods

- Accessories

- Safety Gear
 - Other

AIR PUMP	EN	PUMP1000
ELBOW PADS	EN	EPAD1000
FIRST AID KIT	EN	FAID1000
KNEE PADS	EN	KPAD1000
OFF ROAD HELMET	EN	OHMT1000
REPAIR KIT	EN	RKIT1000
ROAD HELMET	EN	RHMT1000
T-SHIRT	EN	SHRT1000
WATER BOTTLE	EN	BOTL1000
WATER BOTTLE CAGE	EN	CAGE1000

- Raw Materials

BRAKE KIT	EN	BRKT1000
CARBON COMPOSIT WHEEL	EN	CCWH1000
CHAIN	EN	CHAN1000
DERAILLEUR GEAR ASSEMBLY	EN	DGAM1000
HEX NUT 5 MM	EN	HXNT1000
LOCK WASHER 5 MM	EN	LWSH1000
MEN'S OFF ROAD FRAME	EN	OFFR1000
OFF ROAD ALUMINUM WHEEL	EN	ORWH1000
OFF ROAD HANDLE BAR	EN	ORHB1000
OFF ROAD SEAT KIT	EN	OFSE1000
OFF ROAD TIRE	EN	ORTR1000
OFF ROAD TUBE	EN	ORTB1000
PACKAGING	EN	PCKG1000
PEDAL ASSEMBLY	EN	PEDL1000
SOCKET HEAD BOLT 5X20MM	EN	BOLT1000
TOURING ALUMINUM WHEEL	EN	TRWH1000
TOURING FRAME-BLACK	EN	TRFR1000
TOURING FRAME-RED	EN	TRFR3000
TOURING FRAME-SILVER	EN	TRFR2000
TOURING HANDLE BAR	EN	TRHB1000
TOURING SEAT KIT	EN	TRSK1000
TOURING TIRE	EN	TRTR1000
TOURING TUBE	EN	TRTB1000
WARRANTY DOCUMENT	EN	WDOC1000
WOMEN'S OFF ROAD FRAME	EN	OFFR2000

- Semi-Finished Goods

CARBON COMPOSIT WHEEL ASSEMBLY	EN	CCWA1000
OFF ROAD ALUMINUM WHEEL ASSEMBLY	EN	ALWA1000
TOURING ALUMINUM WHEEL ASSEMBLY	EN	ALWA2000

- Finished Goods

- Touring Bikes (Deluxe, Professional) in three colors
- Off-Road Bikes (Men, Women)

DELUXE TOURING BIKE (BLACK)	EN	DXTR1000
DELUXE TOURING BIKE (RED)	EN	DXTR3000
DELUXE TOURING BIKE (SILVER)	EN	DXTR2000
MEN'S OFF ROAD BIKE	EN	ORMN1000
PROFESSIONAL TOURING BIKE (BLACK)	EN	PRTR1000
PROFESSIONAL TOURING BIKE (RED)	EN	PRTR3000
PROFESSIONAL TOURING BIKE (SILVER)	EN	PRTR2000
WOMEN'S OFF ROAD BIKE	EN	ORWN1000

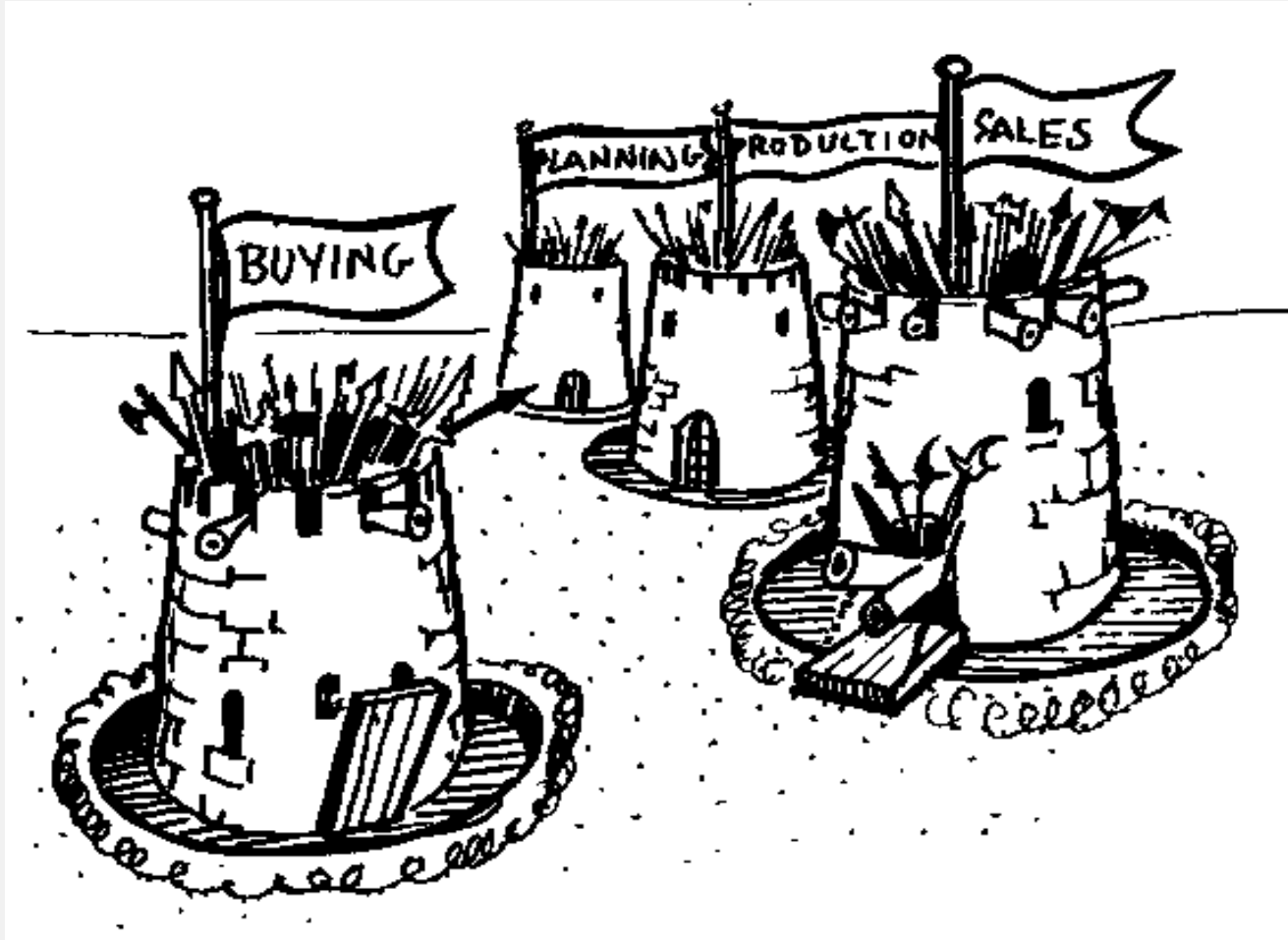
- Customers (US and Germany)

10014	NEW YORK CITY	BIG APPLE BIKES	2000	US00				
18033	BOSTON	BEANTOWN BIKES	5000	US00				
19073	PHILADELPHIA	PHILLY BIKES	3000	US00				
20004	WASHINGTON DC	DC BIKES	11000	US00				
30319	ATLANTA	PEACHTREE BIKES	4000	US00				
32804	ORLANDO	THE BIKE ZONE	25011	US00				
48076	DETROIT	MOTOWN BIKES	8000	US00				
49504	GRAND RAPIDS	FURNITURE CITY BIKES	7000	US00				
60515	CHICAGO	WINDY CITY BIKES	6000	US00				
80111	DENVER	ROCKY MOUNTAIN BIKES	1000	US00				
92612	IRVINE	SOCAL BIKES	9000	US00				
94304	PALO ALTO	SILICON VALLEY BIKES	04227	LEIPZIG	DRAHTESEL	18000	DE00	
98004	SEATTLE	NORTHWEST BIKES	16341	BERLIN	CAPITAL BIKES	16000	DE00	
			17389	ANKLAM	OSTSEERAD	21000	DE00	
			22760	HAMBURG	ALSTER CYCLING	14000	DE00	
			22767	HAMBURG	RED LIGHT BIKES	23000	DE00	
			30627	HANNOVER	CRUISER BIKES	17000	DE00	
			39130	MAGDEBURG	VELODOM	24000	DE00	
			44784	BOCHUM	FAHRPOTT	19000	DE00	
			60549	FRANKFURT	AIRPORT BIKES	13000	DE00	
			69115	HEIDELBERG	NECKARAD	20000	DE00	
			70825	STUTTGART	RÄDLELAND	22000	DE00	
			92275	MÜNCHEN	BAVARIA BIKES	15000	DE00	

- Vendors (US and Germany)

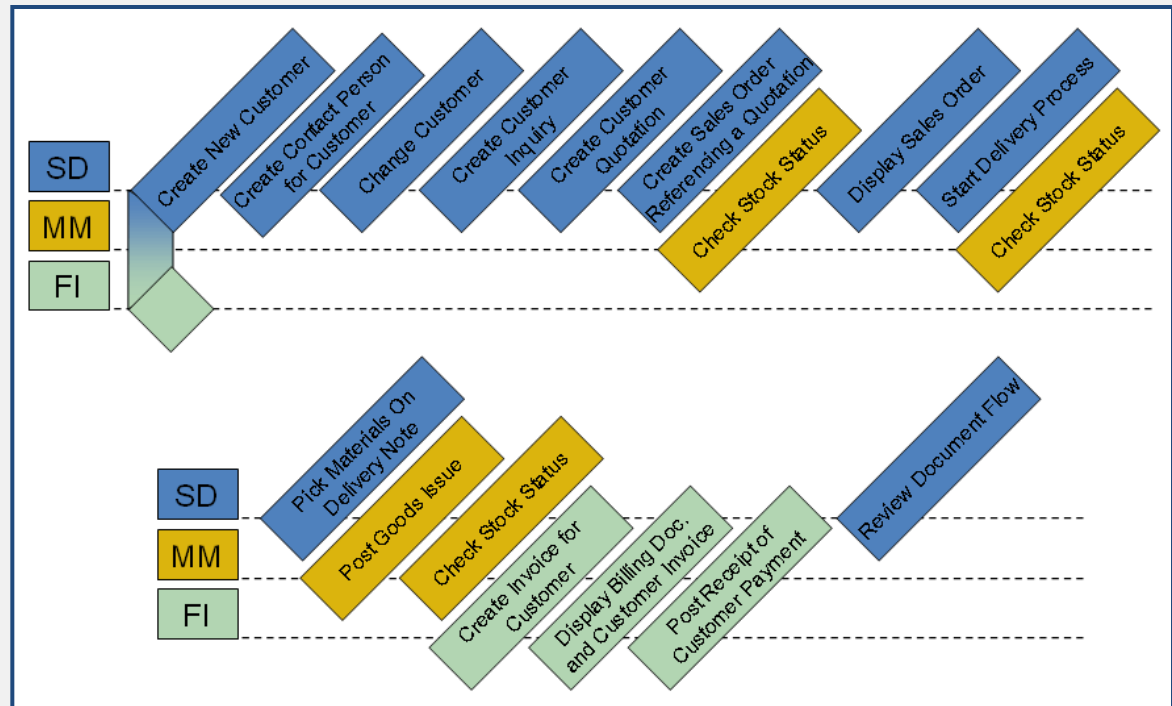
ATLANTA	000	OLYMPIC PROTECTIVE GEAR	101000	US00
CARLSBAD	000	REDWOOD KITS	112000	US00
CINCINNATI	000	BOOMTOWN TIRE & WHEEL	102000	US00
EDISON	000	LIGHTBULB ACCESSORY KITS	104000	US00
GRAND RAPIDS	000	RAPIDS NUTS N BOLTS	108000	US00
HOUSTON	000	SPACE BIKE COMPOSITES	105000	US00
IRVING	000	DALLAS BIKE BASICS	103000	US00
LACROSSE	000	NIGHT RIDER ALUMINUM PROD	106000	US00
MCLEAN	000	SPY GEAR	107000	US00
MIAMI	000	FUN N THE SUN SEATS N BAR	110000	US00
PORTLAND	000	GREEN BLAZERS STAFF	100000	US00
SCOTTSDALE	000	SUNNY SIDE UP TIF	100000	US00
AUGSBURG	000	LOHSE SCHRAUBE	118000	DE00
BIELEFELD	000	PYRAMID BIKING	114000	DE00
BRAUNSCHWEIG	000	BURGMEISTER ZUBEHÖR OHG	113000	DE00
DRESDEN	000	SACHSEN STAHL AG	123000	DE00
ERFURT	000	ABS BRAKES GMBH	115000	DE00
HEILBRONN	000	THICK SPOKE	119000	DE00
KARLSRUHE	000	GUMMI SCHULTZE	117000	DE00
KÖLN	000	COLOGNE BIKE SUPPLIES	122000	DE00
MANNHEIM	000	FLAT TIRE AND MORE	116000	DE00
MÜNCHEN	000	RUN & FUN	124000	DE00
SANDKRUG	000	SHELL GEAR	121000	DE00
WÜRZBURG	000	MAIN CARBON	120000	DE00

- Sell – Fulfillment
- Buy – Procurement
- Make – Production
- Track – Financial Accounting
- Track – Controlling
- People – Human Capital Management
- Store – Inventory and Warehouse Management
- Maintain – Enterprise Asset Management
- Service – Customer Service
- Project – Project Management



Source Unknown

- Order-to-Cash Process
 - Sales and Distribution (SD)
 - Materials Management (MM)
 - Financial Accounting (FI)



- Procure-to-Cash Process
 - Materials Management (MM)
 - Financial Accounting (FI)

