

## SAP University Alliances

**Author** Stefan Weidner  
Babett Koch  
Chris Bernhardt



# Introduction to SAP

### Product

SAP ERP 6.0 EhP7

### Level

Beginner

### Focus

Cross-functional integration  
SD, MM, PP, FI, CO,  
HCM, WM, PS, EAM

### Version

2.40

### Last Update

February 2015



- Introduction to SAP
- Navigation
- Introduction to GBI
- Sales and Distribution
- Materials Management
- Production Planning and Controlling
- Financial Accounting
- Controlling
- Human Capital Management
- Warehouse Management
- Project System
- Enterprise Asset Management

- Introduction to SAP
- SAP Architecture
- SAP ERP Core Applications
- Concepts
  - Organizational Units
  - Master Data
  - Transaction Data
- Documents

- SAP SE
  - Founded in Walldorf, Germany in 1972
  - World's Largest Business Software Company
  - World's Third-largest Independent Software Provider
  
- Company Statistics
  - Over 65,000 employees in more than 75 countries
  - 232,000+ customers in more than 180 countries
  - 200,000+ installations
  - 2,500+ Business Partners

Source: SAP SE website

- World-wide usage
- Designed to satisfy the information needs for all business sizes (small local to large all international)
  - Multi-lingual
  - Multi-currency
  - Multi-balance (parallel G/L Accounting)
- Designed to satisfy the information needs for all industries, e.g.
  - Automotive
  - Banking
  - Retail
  - Public Sector
  - Higher Education and Research etc.

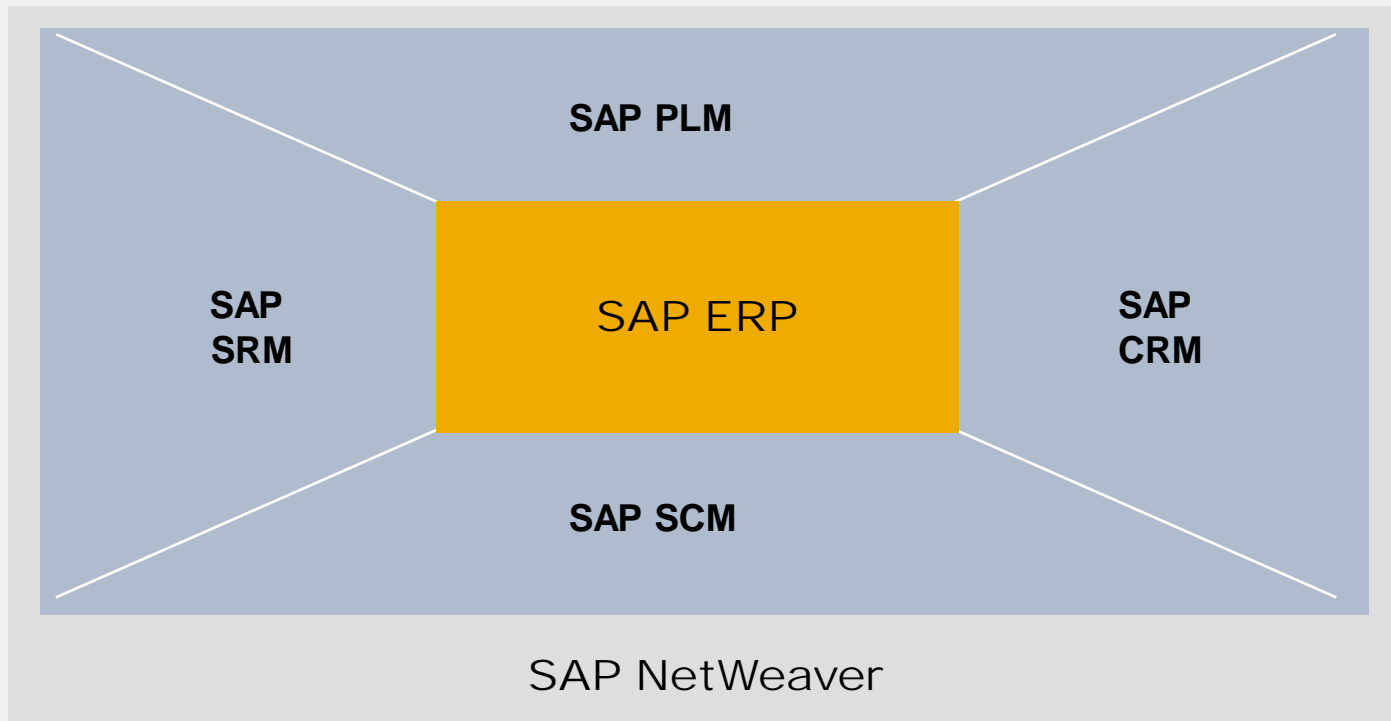
- Enables a company to support and optimize its business processes
- Ties together disparate business functions (integrated business solution) such as
  - Finance (Financial Accounting, Managerial Accounting, Treasury, ...)
  - Logistics (Sales, Procurement, Production, Fulfillment, ...)
  - Human Resources etc.
- Helps the organization run smoothly
- Real-time environment
- Scalable and flexible

- Introduction to SAP
- SAP Architecture
- SAP ERP Core Applications
- Concepts
  - Organizational Units
  - Master Data
  - Transaction Data/
- Documents

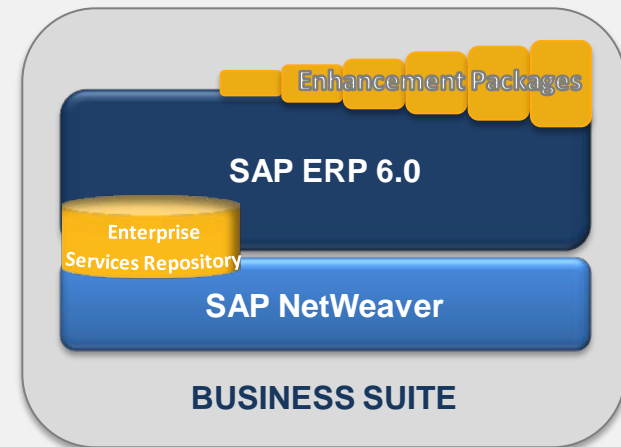


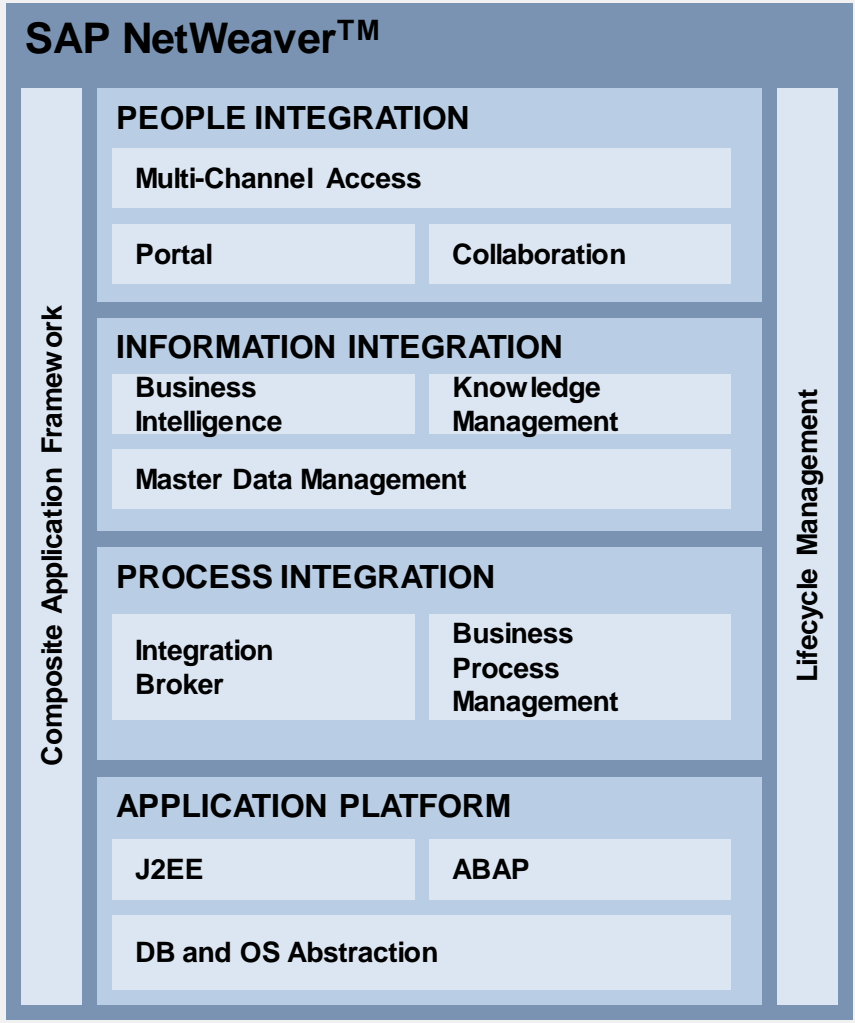
- Client/Server Environment
  - Client – hardware/software environment that can make a request for services for a central repository of resources
  - Server – hardware/software combination that can provide services to a group of clients in a controlled environment
  
- Three – Tier Structure
  - User Interface
    - Graphical User Interface or Web Interface
  - Application Server
    - One or more, help distribute work load
  - Database Server
    - One single data repository





- Optionally installed and activated Software Innovations for SAP ERP 6.0
- Software Innovations are
  - UI simplifications
  - Functional Enhancements
  - Enterprise Services
    - SAP Enhancement Packages are built on different Enhancement Packages
    - Are no Support Packages





- Integration Layers of SAP NetWeaver® are:
  - People Integration
  - Information Integration
  - Process Integration
  - Application Platform

- Introduction to SAP
- SAP Architecture
- **SAP ERP Core Applications**
- Concepts
  - Organizational Units
  - Master Data
  - Transaction Data
- Documents

- Collections of logically related transactions within identifiable business functions
  - MM (“Buy”)
  - PP (“Make”)
  - SD (“Sell”)
  - FI and CO (“Track”)
  - HCM (“People”)
  - WM (“Store”)
  - EAM (“Maintain”)
  - CS (“Service”)

- **Logistics**
  - Sales & Distribution
  - Materials Management
  - Production Planning
  - Plant Maintenance
  - Quality Management
- **Finance**
  - Financial Accounting
  - Managerial Accounting
  - Asset Management
  - Treasury
- **Human Capital Management**
  - Personnel Management
  - Benefits
  - Payroll

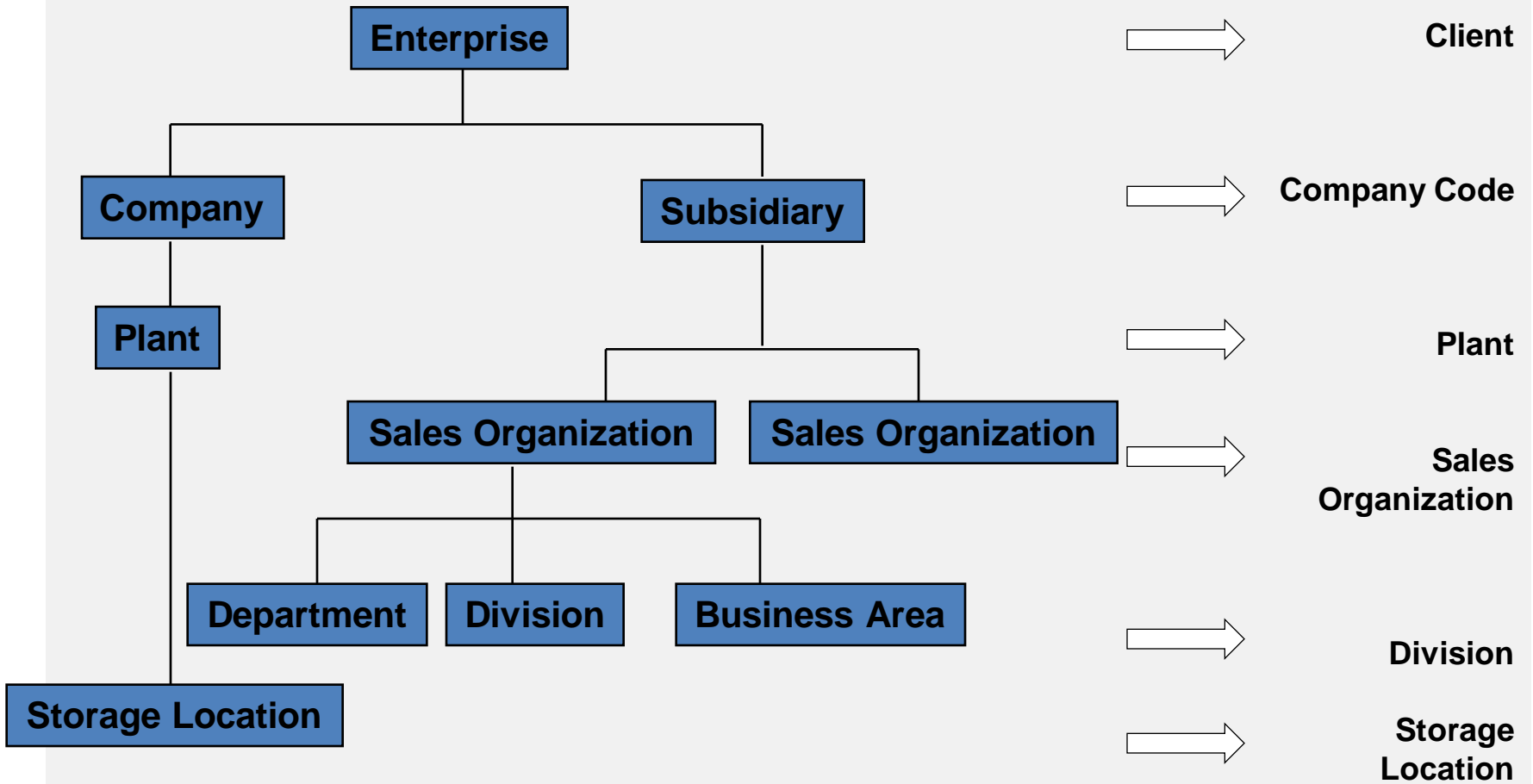
- Introduction to SAP
- SAP Architecture
- SAP ERP Core Applications
- **Concepts**
  - Organizational Units
  - Master Data
  - Transaction Data
- Documents

| ?   | ?   | ?   |
|-----|-----|-----|
|     |     |     |
|     |     |     |
|     |     |     |
|     |     |     |
|     |     |     |
| ... | ... | ... |



- Define the enterprise structure by means of legal or respectively business usage
- Task is to adopt some functions inside of an enterprise and execute them
- Juridical entities, plants, storage locations, sales organizations, profit center
- Examples:
  - Client
    - Highest organizational unit
    - Represents the enterprise which consists out of several parts
  - Company Code
    - Represents judicial entities in an enterprise
    - Central organizational unit in external accounting
  - Sales organization
    - An organizational unit that executes the sale and distribution of products and offers services

**SAP Terminology:**



- Long term data that represent data sets mostly
- Examples:
  - Sales and Distribution:
    - Customer Master
    - Material Master
    - Condition Master

**Display Material DXTR1000 (Finished Product)**

Additional Data Org. Levels

Basic data 1 Basic data 2 Sales: sales org. 1 Sales: sales org. 2

Material

**General data**

|  |                                 |      |                 |   |
|--|---------------------------------|------|-----------------|---|
| Base Unit of Measure                         | <input type="text" value="EA"/> | each | Material Group  | <input type="text" value="BIKES"/>              |
| Old material number                          | <input type="text"/>            |      | Ext. Matl Group | <input type="text"/>                            |
| Division                                     | <input type="text" value="BI"/> |      | Lab/Office      | <input type="text"/>                            |
| Product allocation                           | <input type="text"/>            |      | Prod.hierarchy  | <input type="text"/>                            |
| X-plant matl status                          | <input type="checkbox"/>        |      | Valid from      | <input type="text"/>                            |
| <input type="checkbox"/> Assign effect. vals |                                 |      | GenItemCatGroup | <input type="text" value="NORM"/> Standard item |

**Material authorization group**

Authorization Group

**Dimensions/EANs**

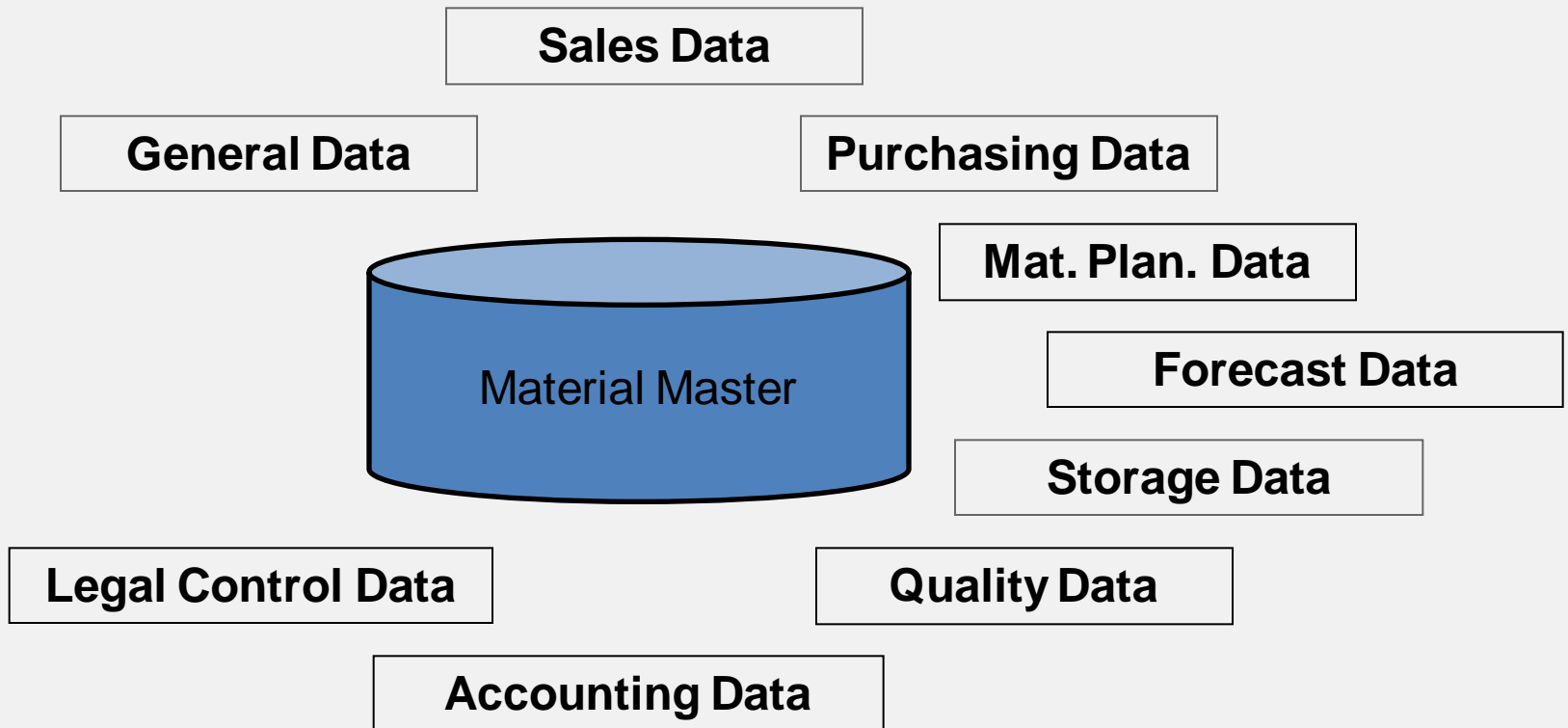
|                 |                                    |              |                                |
|-----------------|------------------------------------|--------------|--------------------------------|
| Gross Weight    | <input type="text" value="8,510"/> | Weight unit  | <input type="text" value="G"/> |
| Net Weight      | <input type="text" value="8,510"/> |              |                                |
| Volume          | <input type="text" value="0.000"/> | Volume unit  | <input type="text"/>           |
| Size/dimensions | <input type="text"/>               |              |                                |
| EAN/UPC         | <input type="text"/>               | EAN Category | <input type="text"/>           |

**Packaging material data**

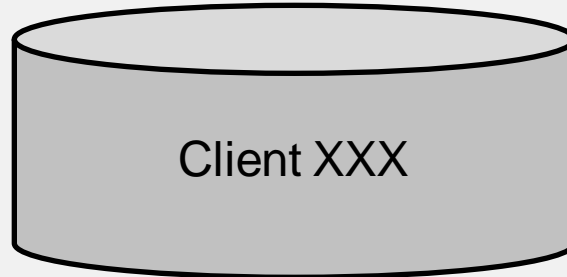
Matl Grp Pack.Matls

**Basic Data Texts**

Languages Maintained  Basic Data Text Language:

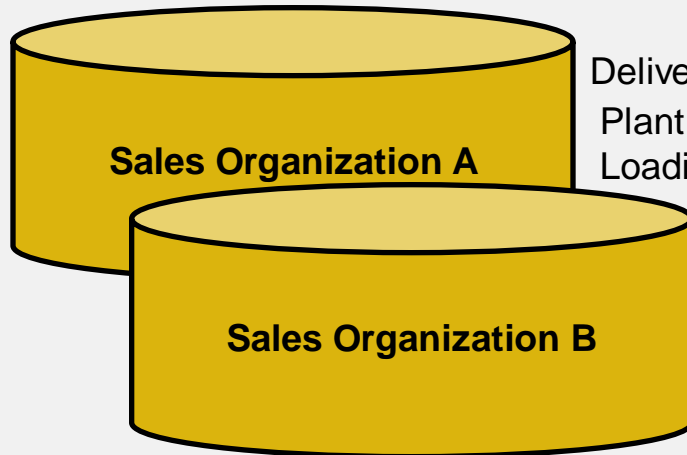


General Data apply for the whole company:



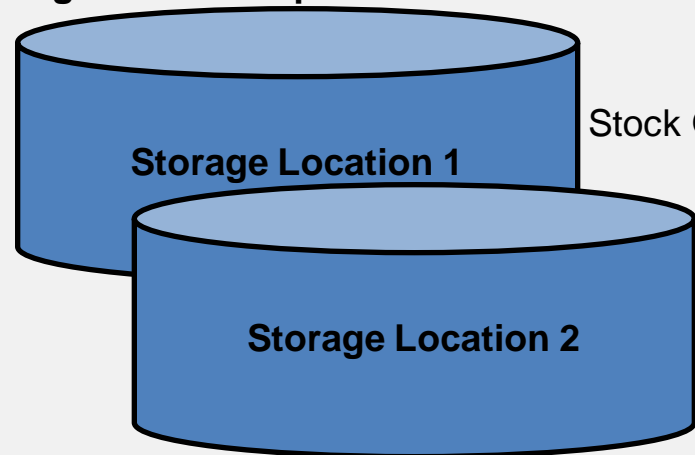
Name  
Weight  
Unit of Measure

Distribution Specific Information:



Delivering  
Plant  
Loading Group

Storage Location Specific Information:



Stock Quantity

- Process related data that is short-lived and dedicated to certain master data
- Master data of a vendor can be assigned to transaction data that concern the sales volume development
- Include:
  - Organizational level
  - Master data
  - Situational data
- Example: customer order
  - Organizational level : client, company code, sales organization
  - Master data: customer master, material master
  - Situational data: date, time, person, amount

**Create Standard Order: Overview**

Standard Order:  Net value: 15,000.00 USD

Sold-To Party: 3100 Philly Bikes / 3999 West Chester Pike / Philadelphia PA 19073

Ship-To Party: 3100 Philly Bikes / 3999 West Chester Pike / Philadelphia PA 19073

PO Number: 100 PO\_date: 05/12/2014

Req. deliv.date: 05/15/2014 Deliver.Plant:

Complete div. Total Weight: 42,550 G

Delivery block:  Volume: 0.000

Billing block:  Pricing date: 05/22/2014

Payment card:  Exp.date:

Card Verif.Code:

Payment terms: 0001 Pay immediately w/ ... Incoterms: FOB Miami

Order reason:

| Item | Material   | Order Quantity | Un  | S                        | Description                 | Customer Material Numb | ItCa |
|------|------------|----------------|-----|--------------------------|-----------------------------|------------------------|------|
|      | 10DXTR1100 |                | 5EA | <input type="checkbox"/> | Deluxe Touring Bike (black) |                        | TAN  |
|      |            |                |     | <input type="checkbox"/> |                             |                        |      |

- Introduction to SAP
- SAP Architecture
- SAP ERP Core Applications
- Concepts
  - Organizational Units
  - Master Data
  - Transaction Data
- Documents



- Data sets that are generated if a business transaction was executed
- Is a record of the business transaction
- Includes all relevant predefined information from the master data and organizational entities
- Example:
  - Sales Document
  - Purchasing Document
  - Material Document
  - Accounting Document





- The document flow as well as the order status allow the setting of the status at any point in time
- SAP revises the status at every time a change in a document takes place

**Document Flow**

Status overview | Display document | Service documents

**Business partner** 0000025000 The Bike Zone  
**Material** DXTR1100 Deluxe Touring Bike (black)

| Document                              | Quantity | Unit | Ref. value | Currency | On         | Status    |
|---------------------------------------|----------|------|------------|----------|------------|-----------|
| ▼ Inquiry 0010000000 / 10             | 5        | EA   | 15,000.00  | EUR      | 11/28/2013 | Completed |
| ▼ Quotation 0020000000 / 10           | 5        | EA   | 14,012.50  | EUR      | 11/28/2013 | Completed |
| ▼ Standard Order 0000000001 / 10      | 5        | EA   | 14,012.50  | EUR      | 11/28/2013 | Completed |
| ▼ Outbound Delivery 0080000000 / 10   | 5        | EA   |            |          | 11/29/2013 | Completed |
| • Picking request 20131129 / 10       | 5        | EA   |            |          | 11/29/2013 | Completed |
| • GD goods issue:delvy 4900002144 / 1 | 5        | EA   | 7,000.00   | EUR      | 11/29/2013 | complete  |
| ▼ Invoice 0090000000 / 10             | 5        | EA   | 14,012.50  | EUR      | 11/29/2013 | Completed |
| • Accounting document 0090000000      | 5        | EA   |            |          | 11/29/2013 | Cleared   |